

GLANDORE CLASSIC REGATTA
22nd to 28th JULY 2017
Glandore Harbour Yacht Club

Sponsored by
Cantor Fitzgerald

SAILING INSTRUCTIONS

1 RULES

- 1.1 The regatta will be governed by the rules as defined in *The Racing Rules of Sailing*.
- 1.2 The Irish Sailing Association (ISA) prescriptions will apply. No see RRS Appendix L
- 1.3 The Pleasure Craft (Personal Flotation Devices & Operation) (Safety) Regulations 2005 (S.I. No. 921 of 2005) will apply. This replaces RRS rule 40.
- 1.4 Handicapping will be under the KLR Formula (Klassiker Rennwert) for Classic Boats and ECHO for modern cruisers and Portsmouth yardstick for all-in dinghies. Handicaps may be adjusted on a daily basis by the Race Committee as they deem necessary in the interests of all competitors.

2 NOTICES TO COMPETITORS

Notices to competitors will be posted on the official notice board located at the Regatta Office located at GHYC Clubhouse, School Road (south side Marine Hotel).

3 CHANGES TO SAILING INSTRUCTIONS

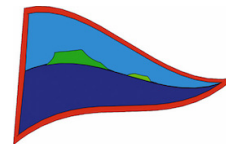
Any change to the sailing instructions will be posted on the notice board and event website before 1000 on the day it will take effect, except that any change to the schedule of races will be posted by 2000 on the day before it will take effect.

4 SIGNALS MADE ASHORE

- 4.1 Signals made ashore will be displayed at the GHYC flag mast located at steps down to pathway outside Glandore Inn
- 4.2 When flag AP is displayed ashore before the scheduled first Warning Signal of the day, '1 minute' is replaced with 'not less than 60 (sixty) minutes' in the race signal AP. Competitors should stay ashore until the AP is lowered.
- 4.3 When AP is displayed after the first Warning Signal of the day any subsequent Warning Signal will be made 1 minute after removal of AP.

5 SCHEDULE OF RACES

Date	Classes per Addendum A		Classic Series Races	
	BAY	HARBOUR	BAY	HARBOUR
Saturday, 22 nd July 2017 Club OD, WAGS & City OD	-	Wags & City 1 racing from 12:00 Club OD racing from 14:00	No	No
Sunday, 23 rd July 2017	-	Wags & City 1 racing from 12:00	No	No
	Parade of Sail from 1500		Yes	Yes
Monday, 24 th July 2017	Racing from 1200	Racing from 1300	Yes	Yes



Tuesday, 25 th July 2017	Racing from 1200	Racing from 1300	Yes	Yes
Wednesday, 26 th July 2017	Cruise in Company to Castletownshend		No	No
Thursday, 27 th July 2017	Racing from 1200	Racing from 1300	Yes	Yes
Friday, 28 th July 2017	Racing from 1200	Racing from 1300	Yes	Yes

- 5.1 On Sunday 23rd July, there will be the Parade of Sail for all Classes which is mandatory for all boats racing as per SI 13.
- 5.2 A briefing for the Parade of Sail will be held outside the Regatta Office at 1200hrs on Sunday, 23rd July, 2017. Separate Sailing Instructions & boat number boards will be distributed to competitors.
- 5.3 A briefing for Classic series competitors will be held outside the Regatta Office at 1000hrs Monday, 24th July, 2017.
- 5.4 The scheduled time of the warning signal for the first Bay classes race each day is 1200hrs, and for the Harbour classes race is 1300hrs.
- 5.5 On Wednesday 26th July the cruise to Castletownshend will take place.
- 5.6 The Departure and/or Warning Signal time for the above offshore cruise will be posted not later than 1800hrs on the day before the event.
- 5.7 On Friday, 28th July, 2017 no warning signal will be made after 1600.

6 CLASS FLAGS

ADDENDUM A shows the individual class flags that will be used during the regatta.

7 RACING AREAS

ADDENDUMS B, Glandore Harbour, & C, Glandore Bay, show the location of racing area.

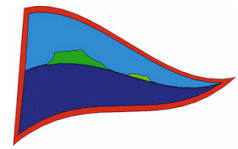
8 THE COURSES

- 8.1 ADDENDA B, Glandore Harbour, & C, Glandore Bay, show the approximate locations of racing marks and the start/finish line.
Note, Glandore Bay mark will be placed each day. Position will vary but it will be on transit from Coastguard Hut on Glandore shore through most southerly Danger Marker
- 8.2 ADDENDUM D shows the courses, including the order in which marks are to be passed, and the side on which each mark is to be left.
- 8.3 No later than the warning signal for each class, the race committee will display the course number to be sailed. The race committee may also display alternative courses in exceptional circumstances.
- 8.4 Except when starting or finishing boats shall not cross the starting or finishing lines. The RC may disqualify any boat in violation of this requirement without a hearing. This amends RRS A4 & A5.

9 MARKS

- 9.1 Marks:

Start Line Outer Limit	SLO	Orange Dan buoy
Harbour	H	Dayglow orange/white pipe
Union Hall	UH	Dayglow orange/white pipe
Kilfinnan	K	Dayglow orange/white pipe
Sunk Rock	SR	Green navigation buoy marking channel
Sheela	SH	Dayglow orange/white pipe
Prison Cove	PC	Dayglow orange/white pipe
Rabbit	R	Dayglow orange/white pipe
Adam	A	Dayglow orange/white pipe
Goat	G	Dayglow orange/white pipe



Black Rock	BR	Large Orange buoy
High Island	HI	Dayglow orange/white pipe
Glandore Bay	GB	Black triangular buoy
Finish Line Outer Limit	FLO	Orange Dan buoy

- 9.2 The start line outer mark (SLO) will be an Orange Dan buoy.
The finish line outer mark (FLO) will be an Orange Dan buoy.
The start line inner limit mark and the finish line inner limit mark will be orange spherical buoys.

10 AREAS THAT ARE OBSTRUCTIONS

- 10.1 ADDENDUM E indicates areas and locations that are particular hazards and designated as obstructions.
- 10.2 Approximately mid channel between Union Hall race mark and Coosaneigh Point there is a dredged channel with a rough longitudinal alignment with Kilfinnan Castle. Commercial traffic has right of way in this channel.
- 10.3 Both the start line and finish shall have inner limit marks to protect the RC boat. Boats shall not enter the area bounded by these marks and the bow and stern of the RC boat. The RC boat may also have a rib or other mark directly astern as part of the protected area. All of this area is designated as an obstruction.

11 THE START

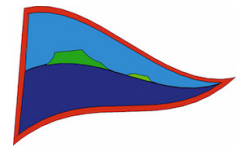
- 11.1 Races will be started with the warning signal made 5 (five) minutes before the starting signal. There will be a minimum of 2 minutes between start signals and subsequent warning signals.
- 11.2 Boats shall start between the inner starting mark and the outer starting mark. The starting line will be from a staff with an orange flag on the RC boat and the outer starting mark. The inner starting mark may not be on the starting line.
- 11.3 Boats whose warning signal has not been made shall avoid the starting area during the starting sequence for other races.
- 11.4 A boat starting later than 5 (five) minutes after her starting signal will be scored Did Not Start without a hearing. This changes rules A4 and A5.
- 11.5 In the event of a downwind start spinnakers shall not be deployed until a boat has properly started and cleared the start line and sailed at least 2 boat lengths from the start line.
- 11.6 The race committee will attempt to call boats over early (OCS) on channel 68. Failure to do so will not constitute grounds for redress.
- 11.7 Please ensure you read 10.3 & 8.4

12 THE FINISH

- 12.1 Boats shall finish between the inner finishing mark and the outer finishing mark. The finishing line will be from a Mast with a blue flag on the RC boat to the outer finishing mark. The inner finishing mark may not be on the finish line.
- 12.2 **Please ensure you read 10.3 & 8.4**

13 PARADE OF SAIL

- 13.1 The Parade of Sail is treated as a 'race' for scoring purposes. All boats participating will be scored points equivalent to 1st place. These points cannot be used in tie breaks and boats failing to participate shall be scored 'Disqualified not Excludable' (DNE). The score from the Parade of Sail cannot be used as a discard in scoring.
- 13.2 Directions for the Parade of Sail are attached to the POS Sailing Instructions. Each competitor shall collect a number card at registration to be displayed by each boat during the Parade of Sail.
- 13.3 The Parade of Sail will be at approximately 1500hrs hours on Sunday, 23rd July, 2017 and will be sailed around designated marks and areas within the harbour.
- 13.4 A briefing will be held outside the Regatta Office at 1200hrs on Sunday, 23rd July, 2017.



14 PENALTY SYSTEM

- 14.1 The Scoring Penalty, rule 44.3, will apply to Bay classes only.
- 14.2 For the Harbour classes rule 44.2 is changed so that the Two-Turns Penalty is replaced by the One-Turn Penalty.

15 TIME LIMITS AND TARGET TIMES

- 15.1 Time limits and target times are as follows:

<u>Class</u>	<u>Time Limit</u>	<u>Mark 1 Time Limit</u>	<u>Target Time</u>
Bay Classes	240 min	40 min	180 min
Harbour Classes	120 min	20 min	60 min

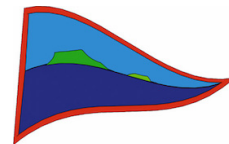
If no boat has passed Mark 1 within the Mark 1 time limit the race for that Class will be abandoned. Failure to meet the target time will not be grounds for redress. This changes rule 62.1(a).

16 PROTESTS AND REQUESTS FOR REDRESS

- 16.1 Protest forms are available at the Regatta Office. Protests and requests for redress or reopening shall be delivered there within the appropriate time limit.
- 16.2 The protest time limit is 60 minutes after the last boat has finished the last race of the day, which will be posted on the notice board.
- 16.3 Notices will be posted no later than 30 minutes after the protest time limit to inform competitors of hearings in which they are parties or named as witnesses. Hearings will be held in the protest room, located at the Regatta Office, beginning at the time posted.
- 16.4 Notices of protests by the race committee or protest committee will be posted to inform boats under rule 61.1(b).
- 16.5 Breaches of instructions 11.3, 19, 22, 24, 25, 26, 27, and 28 will not be grounds for a protest by a boat. This changes rule 60.1(a). Penalties for these breaches may be less than disqualification if the protest committee so decides. The scoring abbreviation for a Discretionary Penalty Imposed under this instruction will be DPI.
- 16.6 On the last scheduled day of racing a request for reopening a hearing shall be delivered
- within the protest time limit if the requesting party was informed of the decision on the previous day;
 - no later than 30 minutes after the requesting party was informed of the decision on that day.
- This changes rule 66.
- 16.7 On the last scheduled day of racing a request for redress based on a protest committee decision shall be delivered no later than 30 minutes after the decision was posted. This changes rule 62.2.

17 ARBITRATION

- 17.1 As an alternative to a full Protest Hearing, an Arbitration System may be used. When all parties to an incident agree, a Protest Arbitrator, appointed by the Sailing Committee may decide a Protest. Such arbitration shall replace the protest hearings required under RRS 63. The system may only be used if, before the hearing, all parties agree to accept the arbitration as final. All the parties shall have the opportunity of stating their case. The Arbitrator shall have total discretion as to whether any witness will be called. At any time during the hearing he may terminate the arbitration and refer the incident to a full Protest Committee hearing; otherwise, at the conclusion of the arbitration hearing he will reach a decision.
- 17.2 Any party found to have infringed a Rule shall not be disqualified but shall instead incur a 20% place penalty. No penalty shall result in a score which would exceed that of a disqualification. Any decision shall be final; however, a Request for Reopening may be made under RRS 66 and instruction 16.6.
- 17.3 When any party, at the time when arbitration is offered, declines to accept arbitration, a full Protest Hearing shall take place.



18 SCORING

- 18.1 One race & Parade of Sail are required to be completed to constitute a series.
- 18.2 (a) When fewer than 5 races have been completed, a boat's series score will be the total of her race scores.
- (b) When 5 races have been completed, a boat's series score will be the total of her race scores excluding her worst score.
- (c) When 8 or more races have been completed, a boat's series score will be the total of her race scores excluding her two worst scores.
- (d) Disqualification will be treated as DNE Disqualification not excludable from the final score

19 SAFETY REGULATIONS

- 19.1 A boat that retires from a race shall notify the race committee as soon as possible.
- 19.2 If a boat capsizes, swamps or is otherwise disabled the two nearest competitors in any Class shall stand by and assist until a crash boat arrives. At the end of the regatta boats standing by to assist will be awarded for that race the average of the points earned in the whole regatta.

20 EQUIPMENT AND MEASUREMENT CHECKS

A boat or equipment may be inspected at any time for compliance with the class rules and sailing instructions.

21 EVENT ADVERTISING

Boats may be required to display advertising supplied by the organizing authority.

22 OFFICIAL BOATS

Official Support boats (e.g.Ferry, Mark) will be marked with the Munster Flag.



23 SUPPORT BOATS

Support boats shall stay outside areas where boats are racing from the time of the preparatory signal for the first class to start until all boats have finished or retired or the race committee signals a postponement, general recall or abandonment.

24 TRASH DISPOSAL

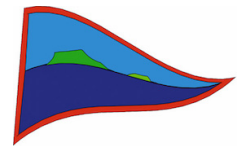
Boats shall not put trash in the water.

25 HAUL-OUT RESTRICTIONS

Keelboats shall not be hauled out during the regatta except with and according to the terms of prior written permission of the race committee.

26 DIVING EQUIPMENT AND PLASTIC POOLS

Underwater breathing apparatus and plastic pools or their equivalent shall not be used around keelboats between the preparatory signal of the first race and the end of the regatta.



27 RADIO COMMUNICATION

Except in an emergency, a boat shall neither make radio transmissions while racing nor receive radio communications not available to all boats. This restriction also applies to mobile telephones. The RC will monitor VHF channel 68.

28 PRIZES

Prizes will be given as follows:

Daily prizes for all classes.

Glandore Classic Regatta, 1st, in each class, other places depending on number in each class.

Classes racing Saturday & Sunday, 1st in each class. The location and time of award ceremonies are scheduled in the Regatta Programme.

29 DISCLAIMER OF LIABILITY

By participating in this event and any related activity sponsored or undertaken by Glandore Harbour Yacht Club, the owner, helmsman and each crew member agree: that they understand that sailing is an activity that has an inherent risk of serious bodily injury (including permanent disability, paralysis and death by drowning or otherwise), property damage and other economic loss; that the safety of the boat and her crew and the decision whether or not to start or continue to race is solely their responsibility and at their own risk, see RRS 4 "Decision to Race"; that Glandore Harbour Yacht Club and its officers, trustees, members, committees, employees or agents, and the event sponsor(s) will not be responsible for damage to any boat or other property, or to any participant, including injury or death; and that each of them releases and waives all claims which he or she, or any heir, representative, successor or assignee, may have against Glandore Harbour Yacht Club and its officers, trustees, members, committees, employees or agents, and the event sponsor(s) arising out of or in any way connected with participation in such race or activity. Again is this clause correct....

30 INSURANCE

Boat owners, helms and crew shall ensure that they are adequately insured against loss, damage or injury to persons, boats or equipment at all times and however occurring including racing, if registered for racing.

ADDENDUM A - CLASSIC REGATTA CLASS FLAGS	attached
ADDENDUM B - GLANDORE HARBOUR – CHART	laminated
ADDENDUM C - GLANDORE BAY – CHART	laminated
ADDENDUM D - COURSES	laminated
ADDENDUM E - OBSTRUCTIONS	laminated

Karen Horgan — Commodore Glandore Harbour Yacht Club
commodore2017@glandoreyc.com

John Wyles—Vice Commodore Glandore Harbour Yacht Club
vcom-sailsec@glandoreyc.com

Sally Fegan-Wyles – Classic Regatta Chairperson
Classic17chair@glandoreyc.com

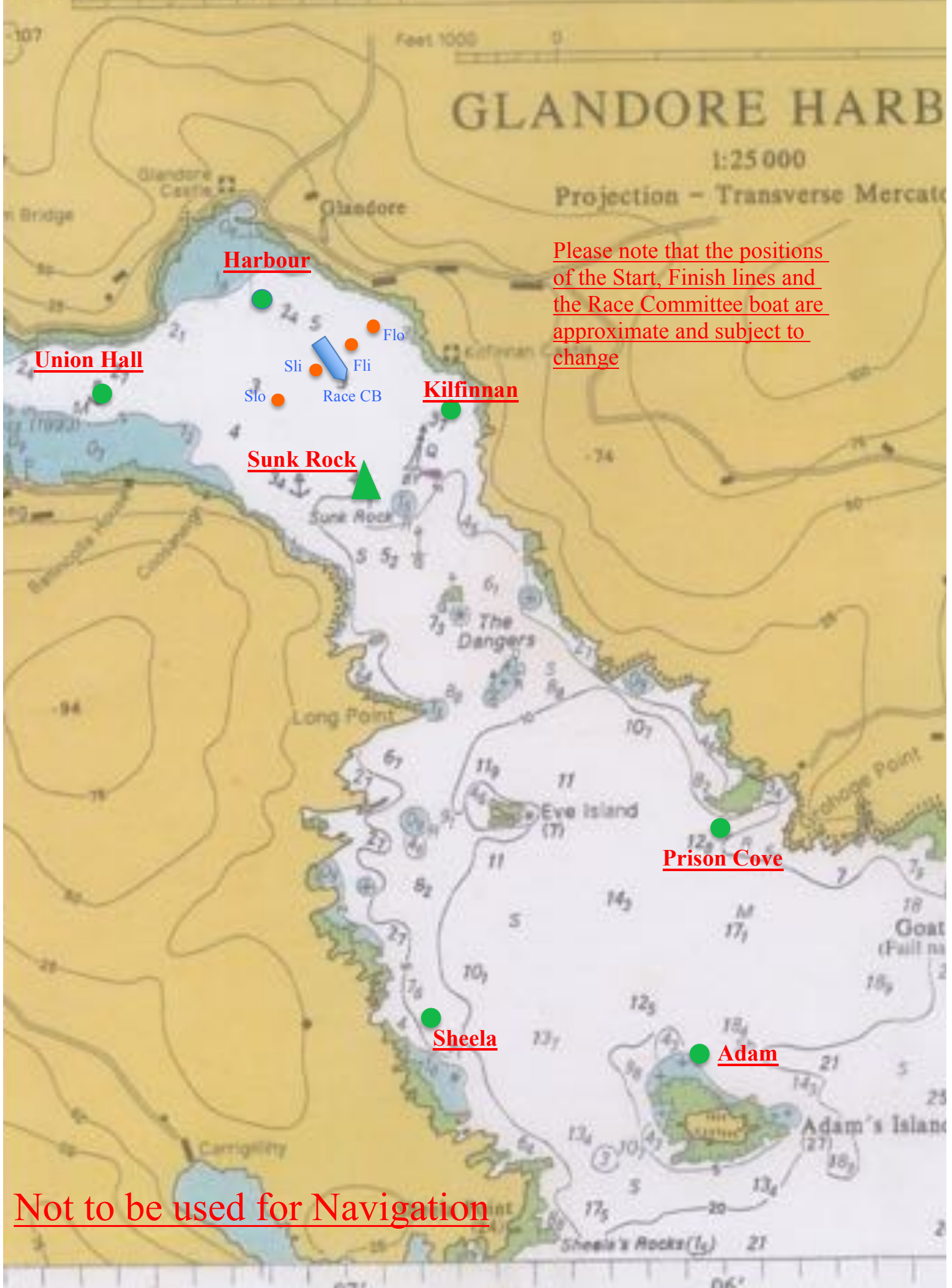
Bill Sandberg—Principal Race Officer
William.L.Sandberg@gmail.com

John & Ann Williams – Club Race Officers
ejwmac@icloud.com & haw.ann@gmail.com

ADDENDUM A – CLASS FLAGS

BAY CLASSES			
Classic Yachts 1	1		FLAG
Classic Yachts 2	2		FLAG
Classic Yachts 3/Work Boats ®	3		FLAG
HARBOUR CLASSES			
Dragons	D		FLAG
Squibs	U		FLAG
Water Wags			FLAG
Ettes (May start with Classic Dinghies)	E		FLAG
Classic dinghies Including Dublin Bay Colleens (If City Ones race they will be included in this Class)	R		FLAG
Day-boats & Misc. ®	Y		FLAG

ADDENDUM B – GLANDORE HARBOUR MARKS



Please note that the positions of the Start, Finish lines and the Race Committee boat are approximate and subject to change

Harbour

Union Hall

Sunk Rock

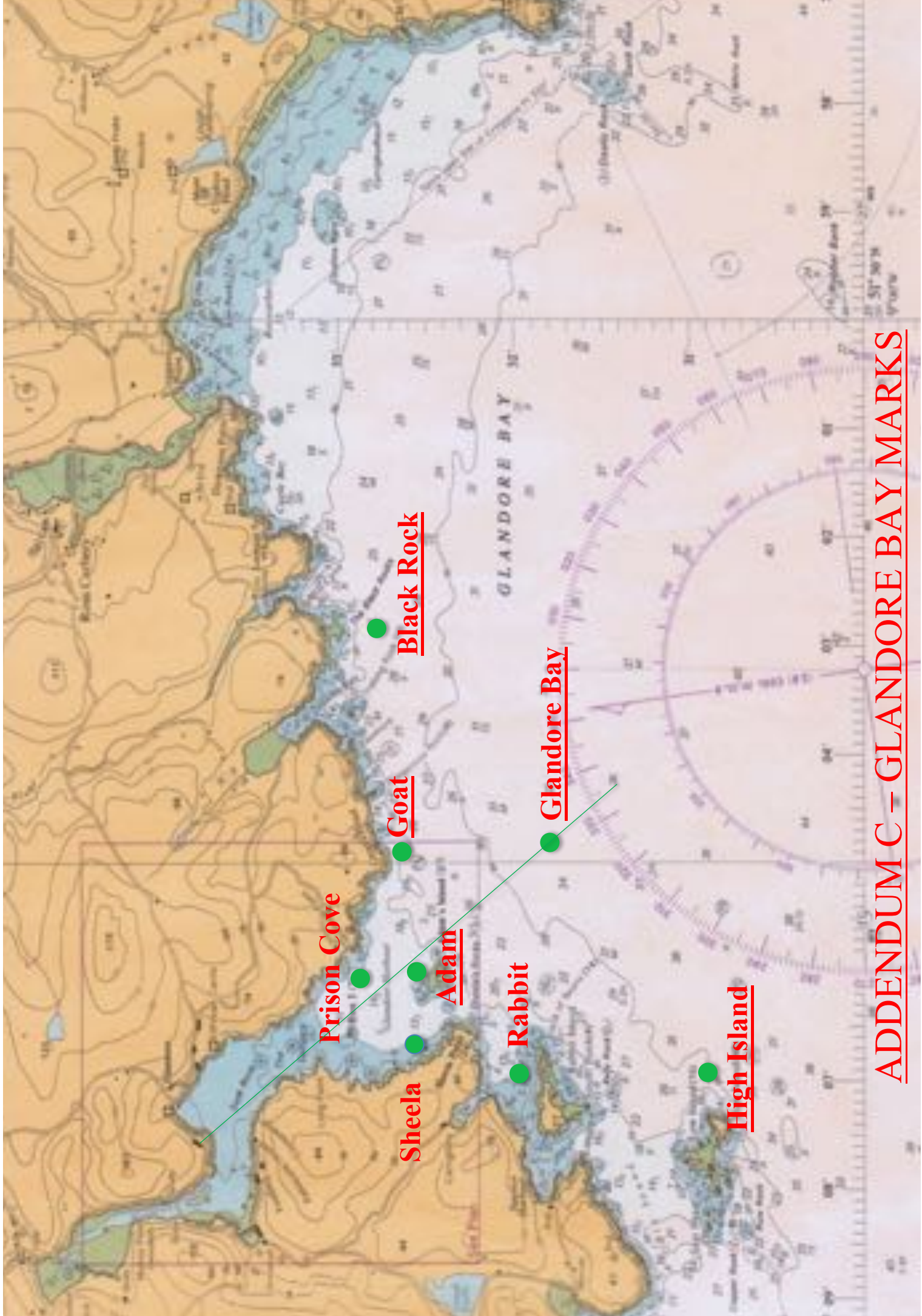
Kilfinnan

Prison Cove

Sheela

Adam

Not to be used for Navigation



Prison Cove

Sheela

Adam

Goat

Black Rock

Rabbit

Glandore Bay

High Island

ADDENDUM C - GLANDORE BAY MARKS

Marks

Start Line Outer Limit	SLO	Orange Dan buoy	
Union Hall	UH	Dayglow orange/white pipe	
Kilfinnan	K	Dayglow orange/white pipe	
Sunk Rock	SR	Green navigation buoy marking channel	
Sheela	SH	Dayglow orange/white pipe	
Prison Cove	PC	Dayglow orange/white pipe	
Rabbit	R	Dayglow orange/white pipe	
Adam	A	Dayglow orange/white pipe	
Goat	G	Dayglow orange/white pipe	
Black Rock	BR	Large Orange buoy	51.32.211 N, 9.2.392 W
High Island	HI	Dayglow orange/white pipe	51.31.053 N , 009.07.257W
Glandore Bay	GB	Black triangular buoy	range E side Adam & Eve
Robber Bank	RB	Large Orange buoy	51.30.190N, 8.58.888W

1	
Start	
RB	S
HI	S
K	P
Finish	

2	
Start	
HI	P
RB	P
K	P
Finish	

3	
Start	
BR	P
K	P
Finish	

4	
Start	
G	S
HI	S
A	P
Finish	

5	
Start	
GB	P
K	P
Finish	

6	
Start	
PC	S
SH	P
A	P
Finish	

7	
Start	
G	S
SH	S
G	S
SH	S
K	P
Finish	

8	
Start	
PC	S
SH	S
SR	S
PC	S
SH	S
SR	S
K	P
Finish	

9	
Start	
G	S
R	S
G	P
K	P
Finish	

10	
Start	
G	S
HI	S
K	P
Finish	

11	
Start	
R	P
A	P
K	P
Finish	

12	
Start	
PC	S
A	S
R	S
PC	P
SH	P
A	P
Finish	

13	
Start	
K	S
SLO	S
UH	S
SLO	P
K	S
SR	S
K	P
Finish	

14	
Start	
A	S
SLO	S
UH	S
SR	S
K	P
Finish	

16	
Start	
K	S
SLO	S
UH	S
SLO	P
K	S
SLO	S
UH	S
SLO	P
K	P
Finish	

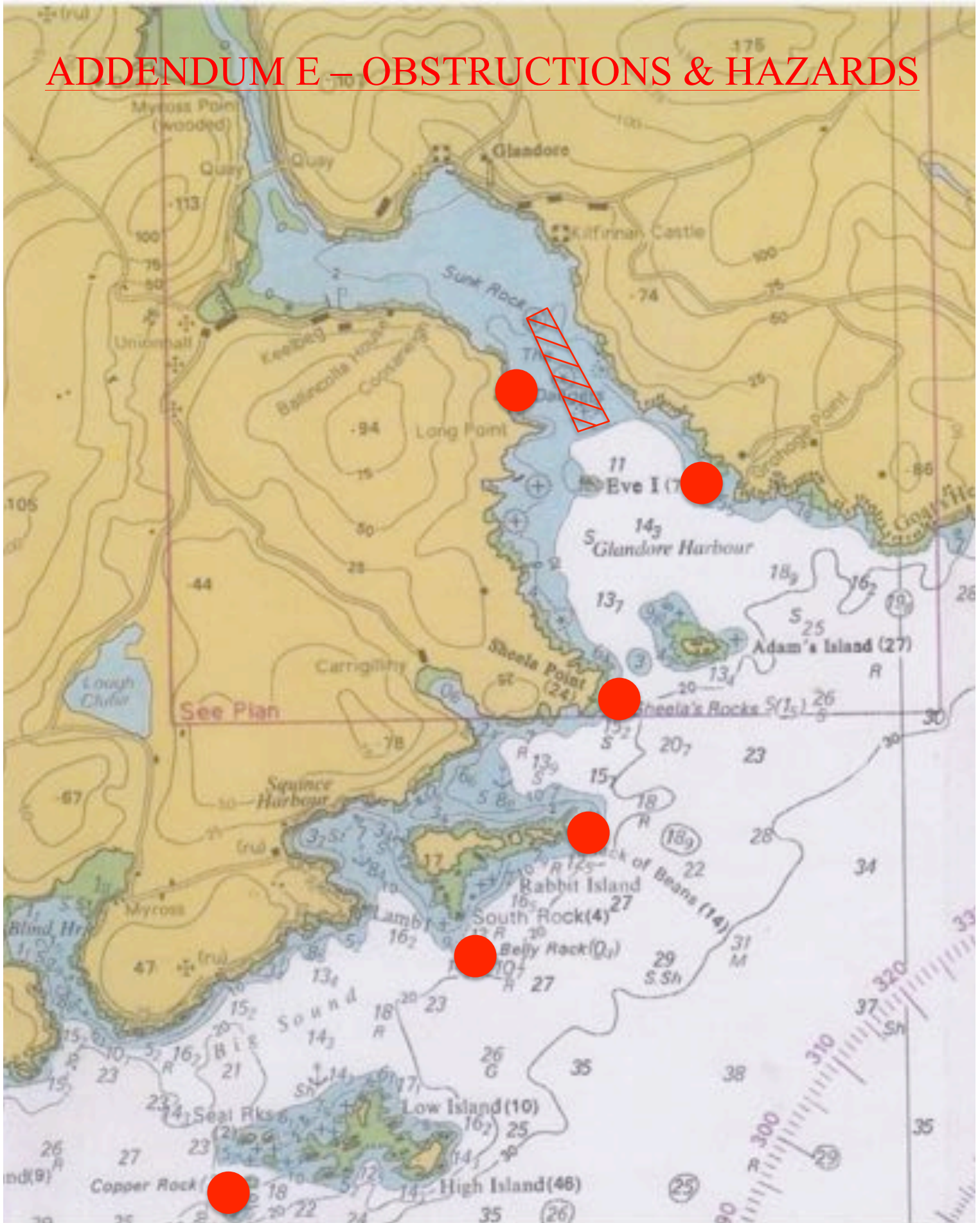
17	
Start	
K	S
SLO	S
UH	S
SLO	P
SR	S
SLO	S
UH	S
SLO	P
SR	P
Finish	

18	
Course to be notified by RC on RC boat information board and by VHF Radio Ch 68	

19	
Course to be notified by RC on RC boat information board and by VHF Radio Ch 68	

15	
Start	
PC	S
SLO	S
UH	S
SR	S
K	P
Finish	

ADDENDUM E – OBSTRUCTIONS & HAZARDS



Not to be used for Navigation