

# GLANDORE HARBOUR YACHT CLUB (GHYC)

2018

## SAILING INSTRUCTIONS (2018 – 2)

### 1. RULES

- 1.1. The League/Regatta/Event will be governed by the rules as defined in *The Racing Rules of Sailing* (RRS)

### 2. NOTICES TO COMPETITORS

- 2.1. Notices to competitors will be posted on the GHYC official notice board.
- 2.2. GHYC also uses an Electronic Notice Board for racing information which can be found at <http://glandoreyc.com/racing/>
- 2.3. Results will be posted on the Electronic Notice Board and on the Official Notice Board as soon as possible after the racing.

### 3. CHANGES TO SAILING INSTRUCTIONS

- 3.1. Any change to the sailing instructions will be posted before 0800 on the day it will take effect, except that any change to the schedule of races will be posted by 2000 on the day before it will take effect.

### 4. SIGNALS MADE ASHORE

- 4.1. Signals made ashore will be displayed from the Club flag pole in the Glandore Square
- 4.2. Changes to when flag AP is displayed ashore will depend on the event, see supplement
- 4.3. Any reference to "flag" is intended to also mean "flag board", Any reference to "over" is intended to also mean "alongside".

### 5. SCHEDULE OF RACES

- 5.1. The supplement will include a table showing the days, dates, number of races scheduled, the scheduled times of the first warning signal each day, and the latest time for a warning signal on the last scheduled day of racing.

### 6. CLASS FLAGS

- 6.1. Each class flag will be the class insignia on a white background or as stated in the supplement.

### 7. THE COURSES

- 7.1. All Course information will be provided in the supplement

### 8. AREAS THAT ARE OBSTRUCTIONS

The following areas are designated as obstructions.

- 8.1. Approximately mid channel between Union Hall pencil type race mark and Coosaneigh Point there is a dredged channel with a rough longitudinal alignment with Kilfinnan Castle. Commercial traffic has right of way in this channel.
- 8.2. The attention of competitors is drawn to the existence of many underwater hazards, both marked and unmarked, within the Glandore Harbour Estuary. Should competitors choose to sail close to, or among these hazards, they do so at their own risk. GHYC accepts no responsibility for the consequences of any such deviation from the set courses.

### 9. RACING AREA & MARKS

- 9.1. The Racing area and a list of the marks that will be used, including a description of each one, will be included in the supplement.
- 9.2. The Type of any new mark will be advised in the supplement

### 10. THE START

- 10.1. Races will be started by using RRS 26.



- 10.2. The starting line will be defined within the supplement
- 10.3. For all downwind starts no boat can hoist a spinnaker unless at least 2 boat lengths downwind of the start line, this adds to RRS 26.

#### **11. CHANGE OF THE NEXT LEG OF THE COURSE**

- 11.1. To change the next leg of the course, the race committee will lay a new mark (or move the finishing line) and remove the original mark as soon as practicable. When in a subsequent change, a new mark is replaced, it will be replaced by an original mark. This changes RRS 33

#### **12. THE FINISH**

- 12.1. The finishing line will be defined in the supplement

#### **13. TIME LIMITS**

- 13.1. The supplement will state which of the following time limits, if any, will apply and, for each, the time limit.
- 13.2. Mark 1 Time Limit - Time limit for the first boat to pass Mark 1.
- 13.3. Race Time Limit and Target Time - These may vary depending on the day races are held, failure to meet the Time Limit will not be grounds for redress. This changes rule 62.1(a)
- 13.4. Finishing Window - Time limit for boats to finish after the first boat sails the course and finishes
- 13.5. If no boat has passed Mark 1 within the Mark 1 Time Limit, the race shall be abandoned.
- 13.6. Boats failing to finish within the Finishing Window shall be scored Did Not Finish without a hearing. This changes RRS 35, A4 and A5.

#### **14. PROTESTS AND REQUESTS FOR REDRESS**

- 14.1. Protest forms are available at the race office. Protests and requests for redress or reopening shall be delivered there within the appropriate time limit.
- 14.2. For each class, the protest time limit is 60 minutes after the last boat has finished the last race of the day or the race committee signals no more racing today, whichever is later.
- 14.3. Notices will be posted no later than 30 minutes after the protest time limit to inform competitors of hearings in which they are parties or named as witnesses and where the hearings will be held.
- 14.4. Notices of protests by the race committee, technical committee or protest committee will be posted to inform boats under RRS 61.1(b).
- 14.5. On the last scheduled day of racing a request for redress based on a protest committee decision shall be delivered no later than 30 minutes after the decision was posted. This changes RRS 62.2.

#### **15. ARBITRATION**

- 15.1. Appendix T will apply

#### **16. TRASH DISPOSAL**

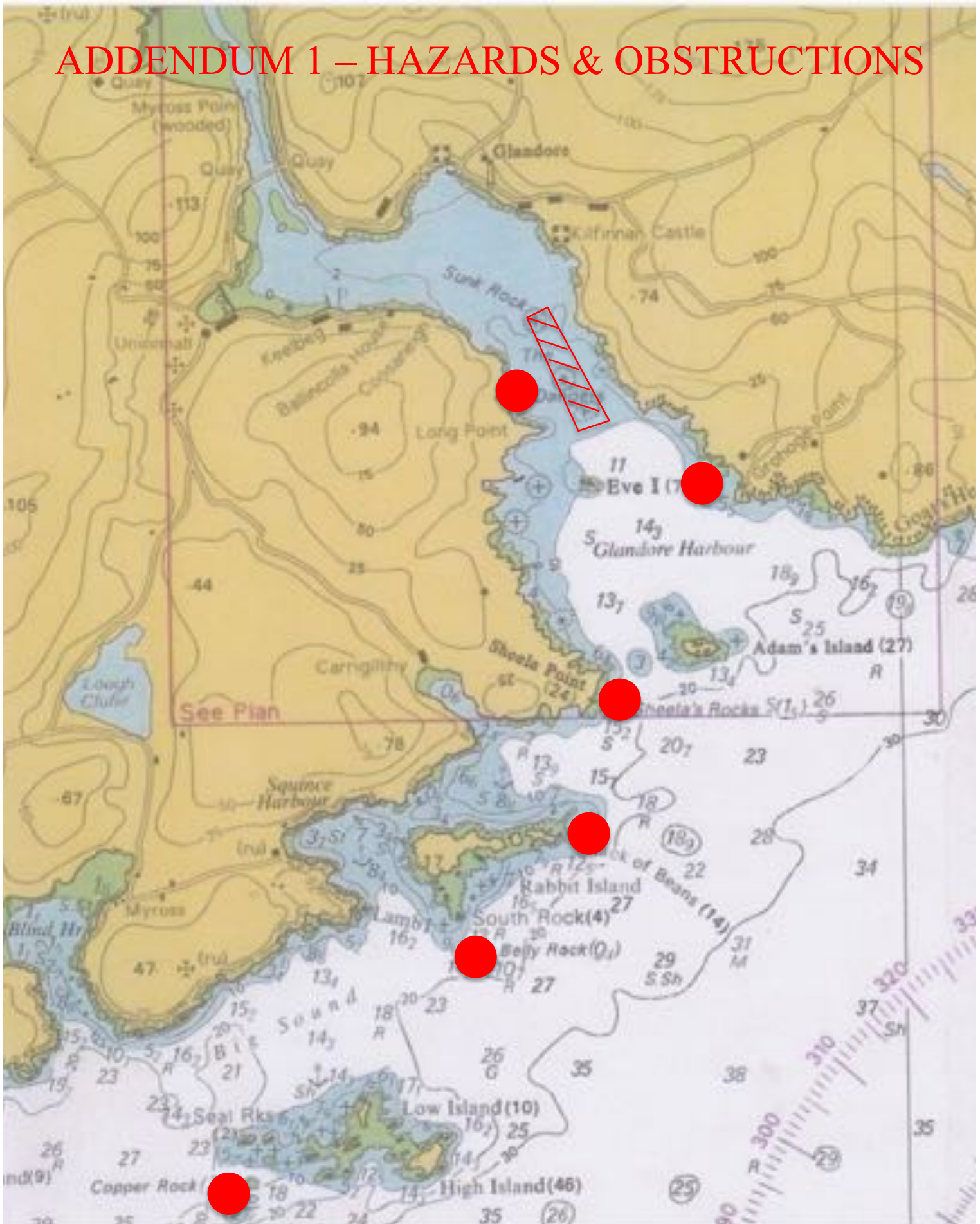
- 16.1. Trash shall be brought ashore and properly disposed.

Additional Information: -

Addendum 1 Hazards & Obstructions

Addendum 2 Starting Flags & Notes.

# ADDENDUM 1 – HAZARDS & OBSTRUCTIONS



NOT TO BE USED FOR NAVIGATION

# ADDENDUM 2 - GHYC 2018 Starting Flags and Notes

Start - Finish Lines - Marks		Notes		
<p>Outer Limit</p> <p>Inner Limit</p> <p>Shoreline</p> <p>Moveable Red Pole</p>	<p>Marks</p> <p>UH - Union Hall K - Kilfinnan A - Adam H - Harbour SR - Sunk Rock S - Sheila Point R - Rabbit Island PC - Prison Cove G - Goat HI - High Island</p> <p>Start Line between Shore Pole (Red) &amp; Outer Limit Mark.</p> <p><u>Note</u> the Inner limit, when used, may not be on the Start Line</p>	<p>Flag</p>	<p>Reason</p> <p>Individual Recall Flag is lowered once all offending boat have re-crossed the line</p> <p>General Recall</p> <p>Shortened Course</p> <p>Go to Finish</p>	<p>Sound Signal</p>

## Starting Sequence

Warning Signal - 5 Minutes to Race	Preparatory Signal - 4 Minutes to Start	Preparatory Signal - 1 Minute to Start	Start Signal
<p>Class Flag(s) are raised</p> <p>Dragons</p> <p>Squibs</p>	<p>P Flag is raised</p> <p>And / Or</p>	<p>P Flag is lowered</p> <p>And / Or</p>	<p>Class Flag(s) lowered</p>

NOTE Channel 68 shall be used by the OD