



# One Design Racing Leagues for Squib and Dragon Classes

May – September 2018

GLANDORE HARBOUR YACHT CLUB

## SUPPLEMENTARY SAILING INSTRUCTIONS

These Supplementary Sailing Instructions must be read in conjunction with the GHYC Standard SI's

### **1 SIGNALS MADE ASHORE**

When flag AP is displayed ashore, '1 minute' is replaced with 'not less than 4 minutes' in the race signal AP. This changes RRS Race Signals AP

### **2 SCHEDULE OF RACES**

The Schedule of Races is detailed in the NOR. Check the GHYC website/calendar for changes.

### **3 CLASS FLAGS**

Class flags will be:      Squib – Code Flag Numeral 1

Dragon – Code Flag D

### **4 RACING AREA AND MARKS**

Addendum 1 shows the location of the racing area and the approximate location and type of marks.

### **5 THE COURSES**

Addendum 2 contains the courses, the order in which marks are to be passed, and the side on which each mark is to be left.

- 5.1 At the discretion of the PRO, a Spreader mark may be added to the course. The Spreader Mark shall be rounded on the same side (Port or Starboard) as the first Mark. The Spreader Mark will only be rounded on the first loop of the course. The PRO may advise the Fleet/s of the addition of the Spreader Mark via CH 68.
- 5.2 Courses may be shortened in accordance with RRS Rule 32(a). "Shortened Course" may be broadcast on ch. 68, at the discretion of the PRO.



- 5.3 Courses Shortened, using the Code Flag S, by the shore based Race Officer will require a course to include the Harbour Mark within the course. Once the S Flag is displayed and the double Horn sounded, competitors will proceed to the Harbour Mark passing between it and the moveable shore based staff described in 6.1.1 in the direction from the previous mark, this adds to RRS Rule 32.2 (a)
- 5.4 Courses may also be shortened by the Race Committee displaying Code Flag F in the vicinity of a mark while making repetitive sound signals. Boats should round/pass the mark on the required side and sail directly to the finishing line. Boats should cross the finish in the direction from the mark at which F is displayed. This adds to RRS Rule 32.2.

## **6 THE START**

- 6.1 The starting line will be the line between either;
- 6.1.1 A moveable shore based red staff with a yellow reflective top and a flagged outer limit mark as described in Addendum 2 – Starting Flags & Notes of the Standard SI's. An inner distance mark, red buoy with pole, may be positioned on or near the shore side of the line. Boats shall start between the flagged limit mark and the inner distance mark at the final crossing of the Start Line... . OR . .
- 6.1.2 A staff with an orange flag on the Race Committee boat and a flagged limit mark as described in Standard SI's Addendum 2 – Starting Flags & Notes
- 6.2 A boat that does not start within 4 minutes after her starting signal will be scored Did Not Start without a hearing. This changes RRS A4 and A5.

## **7 THE FINISH**

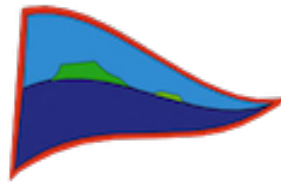
- 7.1 The finishing line will be the same as the start line as described in Addendum 2 – Starting Flags & Notes of the Standard SI's, unless the course is shortened SI [5.2](#), [5.3](#) or [5.4](#)
- 7.2 No boat shall cross the Finish line except when finishing a race.. This changes RRS 28
- 7.3 Boats that have finished shall not re-cross the finishing line in any direction except for some unavoidable cause. The Race Committee may lodge a protest. This changes RRS 60.
- 7.4 The Race Committee Boat, will display a Blue flag with a class flag(s) to indicate which class(es) are finishing.

## **8 TIME LIMITS**

- 8.1 There will be no 1<sup>st</sup> Mark Time Limit
- 8.2 The Race Time Limit will be 75 minutes on Wednesday and 120 minutes on Saturdays
- 8.3 Finishing Window Time limit will be 15 minutes
- 8.4 Any Boat failing to finish within the Finishing Window will be scored Did Not Finish without a hearing. This changes RRS Rule 35, A4 and A5.

## **9 SCORING**

- 9.1 The number of races that are required to be completed to constitute a series is defined in the NOR.
- 9.2 A boat that does not start due to the owner and/or helm and crew providing RO duty shall be scored average points based on scores from races completed. (ROD – Race Officer Duty)
- 9.3 A boat that does not start due to attendance at another competition representing the club shall be scored average points based on scores from races completed (OAOC – Owner Away at Other Competition)
- 9.4 Discards will be deducted from the Boats total score as follows:-



Number of Races	Discards
5	1
8 or more	2
10 or more	3
12 or more	4
14 or more	5
16 or more	6
18 or more	7
20 or more	8

## **10 PRIZES**

10.1 Trophies/Prize will be awarded for each League series on the last day of racing for the League series event, as follows:-

10.1.1 Event Trophy - First past the post Helm & Crew

10.1.2 Event Handicap - Prize - RYA NHC Handicap (excluding any winner in the First Past the Post category) Helm & Crew

Additional Information:-

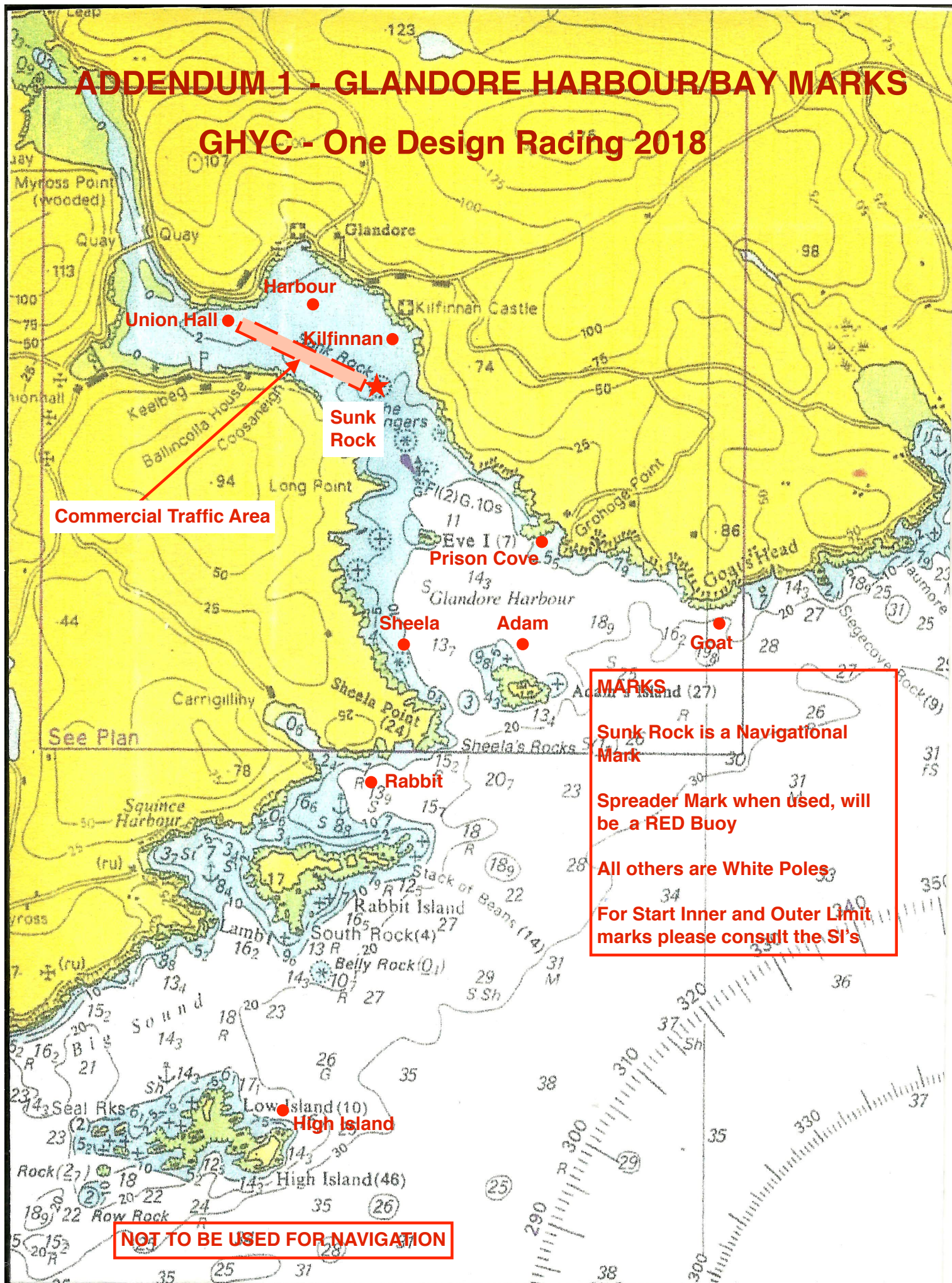
Addendum 1 – Racing Area and approximate location of Marks

Addendum 2 – Courses – the order in which marks are to be passed, and the side on which each mark is to be left.



# ADDENDUM 1 - GLANDORE HARBOUR/BAY MARKS

## GHYC - One Design Racing 2018





## ADDENDUM 2 - GHYC 2018 League Courses

**Repeat:** Signalled by a number card 2 or 3 separated from course number card by blank card reading right to left. ie. 2 blank 3 indicates course 2 with 3 repeat rounds. **Example: Course 1 x 2 = Start Limit P; UH - P; K - P; UH - P; K - P; Finish Limit P**

YELLOW LIMIT STARTS/FINISHES – westerly wind with first leg a beat to UH											
Short Courses											
Course 1			Course 2			Course 3			Course 4		
Start limit	P		Start limit	P		Start limit	P		Start limit	P	
UH	P	Repeat x 2,3	UH	P	Repeat x 2,3	UH	P		UH	P	
K	P		H	P		H	S	Repeat x 2,3	K	S	Repeat x 2,3
Finish	P		UH	P		SR	S		SR	S	
			Finish	S		UH	S		UH	S	
						Finish	S		Finish		
Medium Courses									NAVIGATORS COURSE		
Course 5			Course 6						Course 10		
Start limit	P		Start limit	P					Start limit	P	
UH	P		UH	P					UH	P	
SR	S		K	S					SR	P	
PC	S	Repeat x 2,3	S	P	Repeat x 2,3				H	S	
S	S		PC	P					K	S	
K	P		H	P					S	P	
UH	S		UH	S					PC	S	
Finish	S		Finish	S					A	S	
Long Courses									R	P	
									Course 7		
Start limit	P		Start limit	P		Start limit	P		G	S	Repeat x 2,3
UH	P		UH	P		UH	P		HI	S	
G	S	Repeat x 2,3	A	S		A	S	Repeat x 2,3	Finish	P	
HI	S		HI	P	Repeat x 2,3	R	S				
A	P		G	P			PC	P			
Finish	P		Finish	P		S	S				
						Finish	P				

## ADDENDUM 2 - GHYC 2018 League Courses

**Repeat:** Signalled by a number card 2 or 3 separated from course number card by blank card reading right to left . ie. 12 blank 2 indicates course 12 with 2 repeat rounds. **Example: Course 12 x 2 = Start Limit S; SR - P; H - P; SR - P; H - P; SR - P; Finish Limit P**

RED LIMIT STARTS/FINISHES – southerly wind with first leg a beat or northerly with run out of harbour											
Short Courses											
Course 11			Course 12			Course 13			Course 14		
Start limit	S		Start limit	S		Start limit	S		Start limit	S	
SR	P		SR	P	Repeat x 2,3	SR	S		K	S	
K	P		H	P		UH	S		SR	S	
H	P	Repeat x 2,3	SR	P		H	S		H	S	
K	P		Finish	P		SR	S		K	S	
Finish	P					UH	S		SR	S	
						Finish	S		Finish	P	
Medium Courses									NAVIGATORS COURSE		
Course 15			Course 16			Course 17			Course 21		
Start limit	S		Start limit	S		Start limit	S		Start limit	S	
S	P	Repeat x 2,3	PC	S	Repeat x 2,3	PC	S		SR	S	
PC	P		S	S		SR	P	Repeat x 2,3	UH	S	
SR	S		K	P		UH	S		H	S	
Finish	P		Finish	P		H	P		K	S	
						Finish	P		S	P	
Long Courses									PC	S	
Course 18			Course 19			Course 20			A	S	
Start limit	S		Start Limit	S		Start limit	S		R	P	
S	P		A	P		PC	S		G	S	
G	S	Repeat x 2,3	G	S	Repeat x 2,3	HI	P	Repeat x 2,3	HI	S	
HI	S		R	S		G	P		Finish	P	
A	P		A	P		S	S				
Finish	P		PC	P		PC	P				
			Finish	P		Finish	P				
COURSES SET BY PRO – MARKS AND SIDE TO BE PASSED WILL BE COMMUNICATED ON VHF RADIO CH.68											
Course 30						Course 31					
Start limit	P					Start limit	S				