

At Home Regatta

for Squib and Dragon Classes

Saturday June 1st – Sunday June 2nd 2019

GLANDORE HARBOUR YACHT CLUB

SUPPLEMENTARY SAILING INSTRUCTIONS

These Supplementary Sailing Instructions must be read in conjunction with the GHYC Standard SI's

1 SIGNALS MADE ASHORE

When flag AP is displayed ashore, '1 minute' is replaced with 'not less than 4 minutes' in the race signal AP. This changes RRS Race Signals AP

2 SCHEDULE OF RACES

The Schedule of Races is detailed in the NOR. Check the GHYC website/calendar for changes.

3 CLASS FLAGS

Class flags will be: Squib – Code Flag Naval Numeral 9 

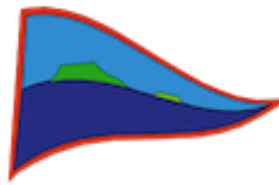
Dragon – Code Flag D 

4 RACING AREA AND MARKS

The Racing area and Marks will be as described in Addendum 2A

5 THE COURSES

- 5.1 The course of each race will be one of the courses shown on the course cards in Addendum 1 if the Start is on shore as described in 6.1.1 below , or a course posted on the committee boat if used for the start as described in 6.1.2 below.
- 5.2 At the discretion of the PRO, a Spreader mark may be added to the course. The Spreader Mark shall be rounded on the same side (Port or Starboard) as the first Mark. The Spreader Mark will only be rounded on the first loop of the course. The PRO may advise the Fleet/s of the addition of the Spreader Mark via CH 68.
- 5.3 Courses may be shortened in accordance with RRS Rule 32.2(a). "Shortened Course" may be broadcast on ch. 68, at the discretion of the PRO.



- 5.4 Courses where the Harbour mark is included may be shortened at that mark by the shore based Race Officer by flying Flag S from the shore flagpole. Once the S Flag is displayed and the double Horn sounded, competitors will proceed from the previous mark to finish at the Harbour Mark passing between it and the moveable shore based staff described in 6.1.1 in the direction from the previous mark, this adds to RRS Rule 32.2 (a)
- 5.5 Courses may also be shortened by the Race Committee displaying Code Flag F in the vicinity of a mark while making repetitive sound signals. Boats should round/pass the mark on the required side and sail directly to the finishing line. Boats should cross the finish in the direction from the mark at which F is displayed. This adds to RRS Rule 32.2.

6 THE START

- 6.1 The starting line will be the line between either;
- 6.1.1 A moveable shore based red staff with a yellow reflective top and a flagged outer limit mark as described in Addendum 2 – Starting Flags & Notes. An inner distance mark, red buoy with pole, may be positioned on or near the shore side of the line. Boats shall start between the flagged limit mark and the inner distance mark at the final crossing of the Start Line... . OR .
- 6.1.2 A staff with an orange flag on the Race Committee boat and a flagged limit mark as described in Addendum 2 – Starting Flags & Notes
- 6.2 A boat that does not start within 4 minutes after her starting signal will be scored Did Not Start without a hearing. This changes RRS A4 and A5.

7 THE FINISH

- 7.1 The finishing line will be the same as the start line as described in Addendum 2 – Starting Flags & Notes, unless the course is shortened.
- 7.2 No boat shall cross the Finish line except when finishing a race.. This changes RRS 28
- 7.3 Boats that have finished shall not re-cross the finishing line in any direction except for some unavoidable cause. The Race Committee may lodge a protest. This changes RRS 60.
- 7.4 The Race Committee may display a Blue flag with a class flag(s) to indicate which class(es) are finishing.

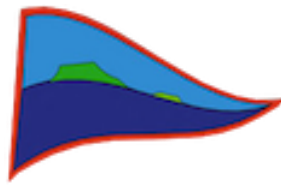
8 TIME LIMITS

- 8.1 There will be no 1st Mark Time Limit
- 8.2 The Race Time Limit will be 120 minutes
- 8.3 Finishing Window Time limit will be 15 minutes
- 8.4 Any Boat failing to finish within the Finishing Window will be scored Did Not Finish without a hearing. This changes RRS Rule 35, A4 and A5.

9 SCORING

- 9.1 The number of races that are required to be completed to constitute a series is defined in the NOR.
- 9.2 Discards will be deducted from the Boats total score as follows:-

Number of Races	Discards
5	1
8	2



10 PRIZES

10.1 Trophies/Prize will be awarded, as follows:-

10.2 Dragons

10.2.1 Donie O'Sullivan Perpetual Memorial Cup - First past the post Helm & Crew. Prizes will be awarded to the second boat helm and crew.

10.2.2 Event Handicap - Prize - RYA NHC Handicap (excluding any winner in the First Past the Post category) Helm & Crew of 1st only

10.3 Squibs

10.3.1 CH Marine Cup - First past the post Helm & Crew. Prizes will be awarded to the second boat helm and crew.

10.3.2 Event Handicap - Prize - RYA NHC Handicap (excluding any winner in the First Past the Post category) Helm & Crew of 1st only

Addendum 1 List of Standard Courses

Addendum 2A Map of race area with marks

Addendum 2B Notes on Start/Finish lines and course codes.

ADDENDUM 1 - GHYC OD League Courses

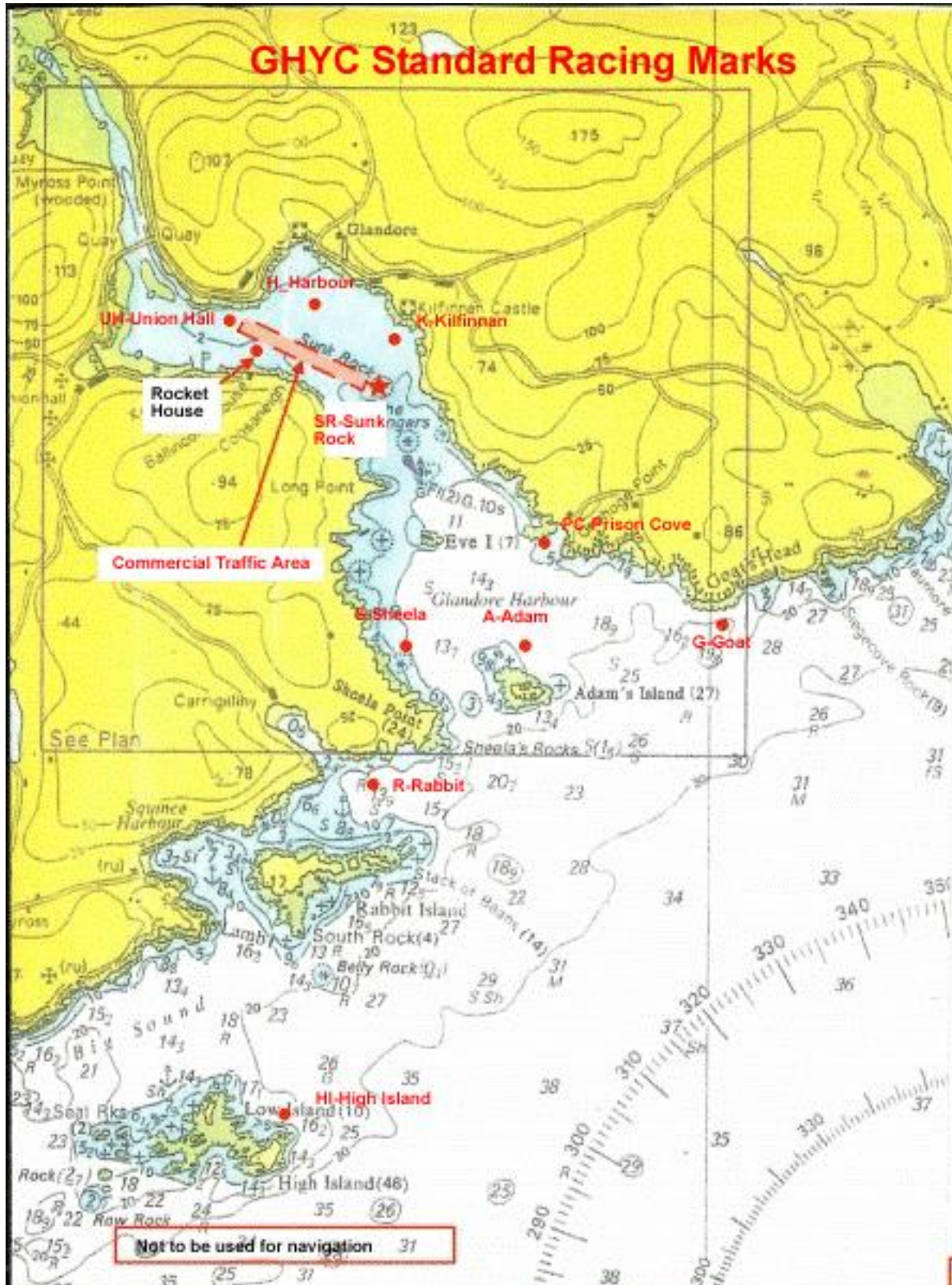
Repeat legs:	IF on the start notice board the course number is followed by a board with the letter R, this means that the two marks with "Repeat marks" next to them are to be repeated once, added to the course before the next mark. eg course 4R means the course is Start,UH,K,SR,K,SR,UH,Finish										
Laps	IF more than one lap is required, the P.R.O. will display (L to R) the course card(s), a blank card, a number card with the number of laps to be sailed. Each lap is the whole course.										
YELLOW LIMIT STARTS/FINISHES – westerly wind with first leg a beat to UH											
Short Courses											
Course 1			Course 2			Course 3			Course 4		
Start limit	P		Start limit	P		Start limit	P		Start limit	P	
UH	P	Repeat marks	UH	P	Repeat marks	UH	P		UH	P	
K	P		H	P		H	S	Repeat marks	K	S	Repeat marks
Finish	P		UH	P		SR	S		SR	S	
			Finish	S		UH	S		UH	S	
						Finish	S		Finish	S	
Medium Courses									NAVIGATORS COURSE		
Course 5			Course 6						Course 10		
Start limit	P		Start limit	P					Start limit	P	
UH	P		UH	P					UH	P	
SR	S		K	S					SR	P	
PC	S	Repeat marks	S	P	Repeat marks				H	S	
S	S		PC	P					K	S	
K	P		H	P					S	P	
UH	S		UH	S					PC	S	
Finish	S		Finish	S		A	S				
Long Courses									R	P	
Course 7			Course 8			Course 9			G	S	
Start limit	P		Start limit	P		Start limit	P		HI	S	
UH	P		UH	P		UH	P		Finish	P	
G	S	Repeat marks	A	S		A	S	Repeat marks			
HI	S		HI	P	Repeat marks	R	S		COURSE SET BY P.R.O.		
A	P		G	P			PC	P			Course 30
Finish	P		Finish	P		S	S		Start limit	P	
						Finish	P		Course 30 marks will be announced on VHF		

ADDENDUM 1 - GHYC OD League Courses

Repeat legs:	IF on the start notice board the course number is followed by a board with the letter R, this means that the two marks with "Repeat marks" next to them are to be repeated once, added to the course before the next mark. eg course 15R means the course is Start,S,PC,S,PC,SR,Finish.											
Laps	IF more than one lap is required, the P.R.O. will display (L to R) the course card(s), a blank card, a number card with the number of laps to be sailed. Each lap is the whole course.											
RED LIMIT STARTS/FINISHES – southerly wind with first leg a beat or northerly with run out of harbour												
Short Courses												
Course 11			Course 12			Course 13			Course 14			
Start limit	S		Start limit	S		Start limit	S		Start limit	S		
SR	P		SR	P	Repeat marks	SR	S		K	S		
K	P		H	P			UH	S		SR	S	
H	P	Repeat marks	SR	P			H	S		H	S	
K	P		Finish	P		SR	S		K	S		
Finish	P					UH	S		SR	S		
						Finish	S		Finish	P		
Medium Courses									NAVIGATORS COURSE			
Course 15			Course 16			Course 17			Course 21			
Start limit	S		Start limit	S		Start limit	S		Start limit	S		
S	P	Repeat marks	PC	S	Repeat marks	PC	S		SR	S		
PC	P		S	S		SR	P	Repeat marks	UH	S		
SR	S		K	P			UH		S	H	S	
Finish	P		Finish	P		H	P		K	S		
						Finish	P		S	P		
Long Courses									PC	S		
Course 18			Course 19			Course 20			A	S		
Start limit	S		Start Limit	S		Start limit	S		R	P		
S	P		A	P		PC	S		G	S		
G	S	Repeat marks	G	S	Repeat marks	HI	P	Repeat marks	HI	S		
HI	S		R	S		G	P		Finish	P		
A	P		A	P		S	S		COURSE SET BY P.R.O.			
Finish	P		PC	P		PC	P		Course 31			
			Finish	P		Finish	P		Start limit	S		
									Course 31 marks will be announced on VHF			

SSI ADDENDUM 2a Map of Racing Area and Racing Marks

All marks are white poles except Sunk Rock which is a green navigational buoy.



SSI ADDENDUM 2b - GHYC 2019 - Starting Flags and Notes

Standard Shore based Start/ Finish Lines -		List of Marks and mark codes		Notes															
<div><p>Outer Limit</p><p>Inner Limit</p><p>Shoreline</p><p>Moveable Red Pole</p></div>		<p>Marks</p> <p>UH - Union Hall K - Kilfinnan A - Adam H -Harbour SR - Sunk Rock S - Sheila Point R-Rabbit Island PC-Prison Cove G-Goat HI-High Island</p>																	
		<p>Start/Finish Line is between Shore Pole (Red) & Outer Limit Mark.</p> <p><u>Note</u> the Inner limit, when used, may not be on the Start Line</p>																	
		<table><tr><th>Flag</th><th>Reason</th><th>Sound Signal</th></tr><tr><td></td><td>Individual Recall Flag is lowered once all offending boat have re-crossed the line, and will be lowered after 4 mins from Start Signal</td><td></td></tr><tr><td></td><td>General Recall</td><td></td></tr><tr><td></td><td>Shortened Course</td><td></td></tr><tr><td></td><td>Go to Finish</td><td></td></tr></table>	Flag	Reason	Sound Signal		Individual Recall Flag is lowered once all offending boat have re-crossed the line, and will be lowered after 4 mins from Start Signal			General Recall			Shortened Course			Go to Finish			
Flag	Reason	Sound Signal																	
	Individual Recall Flag is lowered once all offending boat have re-crossed the line, and will be lowered after 4 mins from Start Signal																		
	General Recall																		
	Shortened Course																		
	Go to Finish																		

Starting Sequence

Warning Signal - 5 Minutes to Race	Preparatory Signal - 4 Minutes to Start	Preparatory Signal - 1 Minute to Start	Start Signal
Class Flag(s) are raised Dragons Squibs	P Flag is raised And / Or	P Flag is lowered And / Or	Class Flag(s) lowered

NOTE Channel 68 shall be used by the OD