

## GLANDORE HARBOUR YACHT CLUB (GHYC)

### STANDARD SAILING INSTRUCTIONS (SI's) 2019

**These Sailing Instructions must be used in conjunction with the Supplementary SI's for the race/League series/regatta/event**

#### 1. Fair Sailing for All & Sportsmanship

- 1.1. Competitors in the sport of sailing are governed by a body of rules that they are expected to follow and enforce. A fundamental principal of sportsmanship is that when competitors break a rule they shall promptly take a penalty or retire.

#### 2. RULES

- 2.1. The Race/League series/Regatta/Event will be governed by the rules as defined in *The Racing Rules of Sailing*.(RRS).

#### 3. NOTICES TO COMPETITORS

- 3.1. Notices to competitors will be posted on the GHYC official notice board.
- 3.2. GHYC also uses an Electronic Notice Board for racing information which can be found at <http://glandoreyc.com/racing/>
- 3.3. Results will be posted on the Electronic Notice Board and on the Official Notice Board as soon as possible after the racing.

#### 4. CHANGES TO SAILING INSTRUCTIONS

- 4.1. Any change to the sailing instructions will be posted before 0800 on the day it will take effect, except that any change to the schedule of races will be posted by 2000 on the day before it will take effect.

#### 5. SIGNALS MADE ASHORE

- 5.1. Signals made ashore will be displayed from the Club flag pole in the Glandore Square
- 5.2. Changes to when flag AP is displayed ashore will depend on the event, see Supplementary SI's
- 5.3. Any reference to "flag" is intended to also mean "flag board", Any reference to "over" is intended to also mean "alongside".

#### 6. CLASS FLAGS

- 6.1. Each class flag will be the class insignia on a white background or as stated in the Supplementary SI's.

#### 7. THE COURSES

- 7.1. All Course information will be provided in the Supplementary SI's

#### 8. AREAS THAT ARE OBSTRUCTIONS OR HAZARDS

Competitors should note the following:

- 8.1. Approximately mid channel between Union Hall pencil type race mark and Coosaneigh Point there is a dredged channel with a rough longitudinal alignment with Kilfinnan Castle. Commercial traffic has right of way in this Channel. This area is shown on the map of racing marks.
- 8.2. The attention of competitors is drawn to the existence of many underwater hazards, both marked and unmarked, within the Glandore Harbour Estuary. Should competitors choose to sail close to, or among these hazards, they do so at their own risk..

#### 9. RACING AREA & MARKS

The Racing area and a list of the marks that will be used, including a description of each one, will be included in the Supplementary Sis..

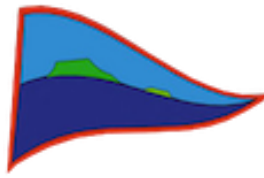
- 9.1. The Type of any new mark will be advised in the Supplementary SI's

#### 10. THE START

- 10.1. Races will be started by using RRS 26.
- 10.2. The starting line will be defined within the Supplementary SI's.

#### 11. CHANGE OF THE NEXT LEG OF THE COURSE

- 11.1. To change the next leg of the course, the race committee will lay a new mark (or move the finishing line) and remove the original mark as soon as practicable. When in a subsequent



change, a new mark is replaced, it will be replaced by an original mark. This changes RRS 33

## **12. THE FINISH**

12.1. The finishing line will be defined in the Supplementary SI's

## **13. TIME LIMITS**

13.1. The Supplementary SI's will state which of the following time limits, if any, will apply and, for each, the time limit.

13.2. Mark 1 Time Limit - Time limit for the first boat to pass Mark 1.

13.3. Race Time Limit and Target Time - These may vary depending on the day races are held, failure to meet the Time Limit will not be grounds for redress. This changes rule 62.1(a)

13.4. Finishing Window - Time limit for boats to finish after the first boat sails the course and finishes

13.5. If no boat has passed Mark 1 within the Mark 1 Time Limit, the race shall be abandoned.

13.6. Boats failing to finish within the Finishing Window shall be scored Did Not Finish without a hearing. This changes RRS 35, A4 and A5.

## **14. PROTESTS AND REQUESTS FOR REDRESS**

14.1. Protest forms are available at the race office. Protests and requests for redress or reopening shall be delivered there within the appropriate time limit.

14.2. For each class, the protest time limit is 60 minutes after the last boat has finished the last race of the day or the race committee signals no more racing today, whichever is later.

14.3. Notices will be posted no later than 30 minutes after the protest time limit to inform competitors of hearings in which they are parties or named as witnesses and where the hearings will be held.

14.4. Notices of protests by the race committee, technical committee or protest committee will be posted to inform boats under RRS 61.1(b).

14.5. On the last scheduled day of racing a request for redress based on a protest committee decision shall be delivered no later than 30 minutes after the decision was posted. This changes RRS 62.2.

## **15. SAFETY REGULATIONS**

15.1. Personal Floatation Devices (PFD's)

All competitors shall wear PFDs at all times while afloat, except briefly while changing or adjusting clothing or personal equipment. Flag Y will not be displayed. Wet suits and dry suits are not PFDs. This alters RRS Rule 40

## **16. ARBITRATION**

16.1. Appendix T will apply

## **17. TRASH DISPOSAL**

17.1. Trash shall be brought ashore and properly disposed.

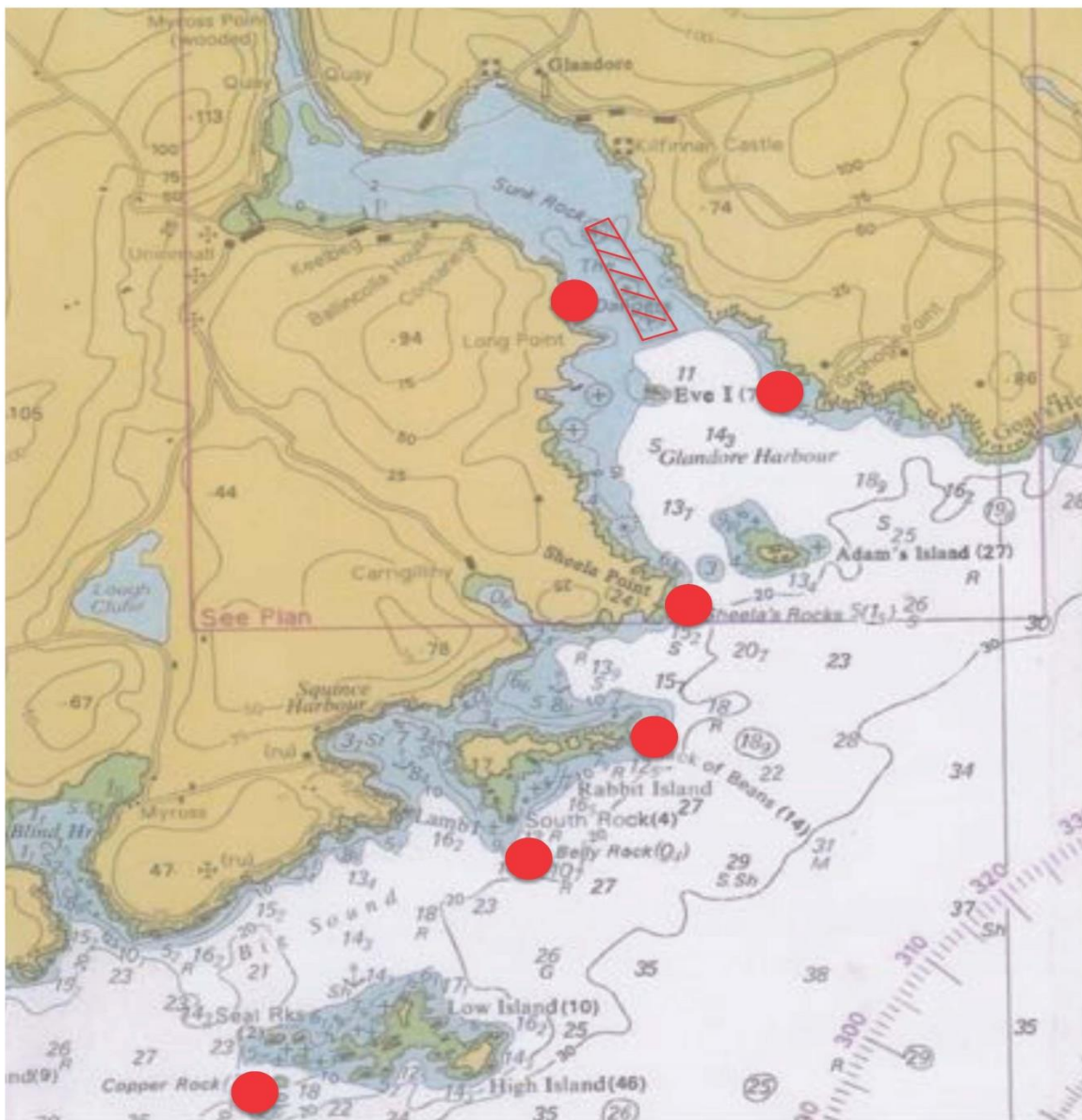
Addendum 1 map of the race area with approximate position of known hazards

Addendum 2A map of standard racing marks (check SSI to see if used)

Addendum 2B notes on starting and finishing lines, codes for marks, starting sequence.

## STANDARD SI ADDENDUM 1

### MAP OF HAZARDS IN GLANDORE HARBOUR

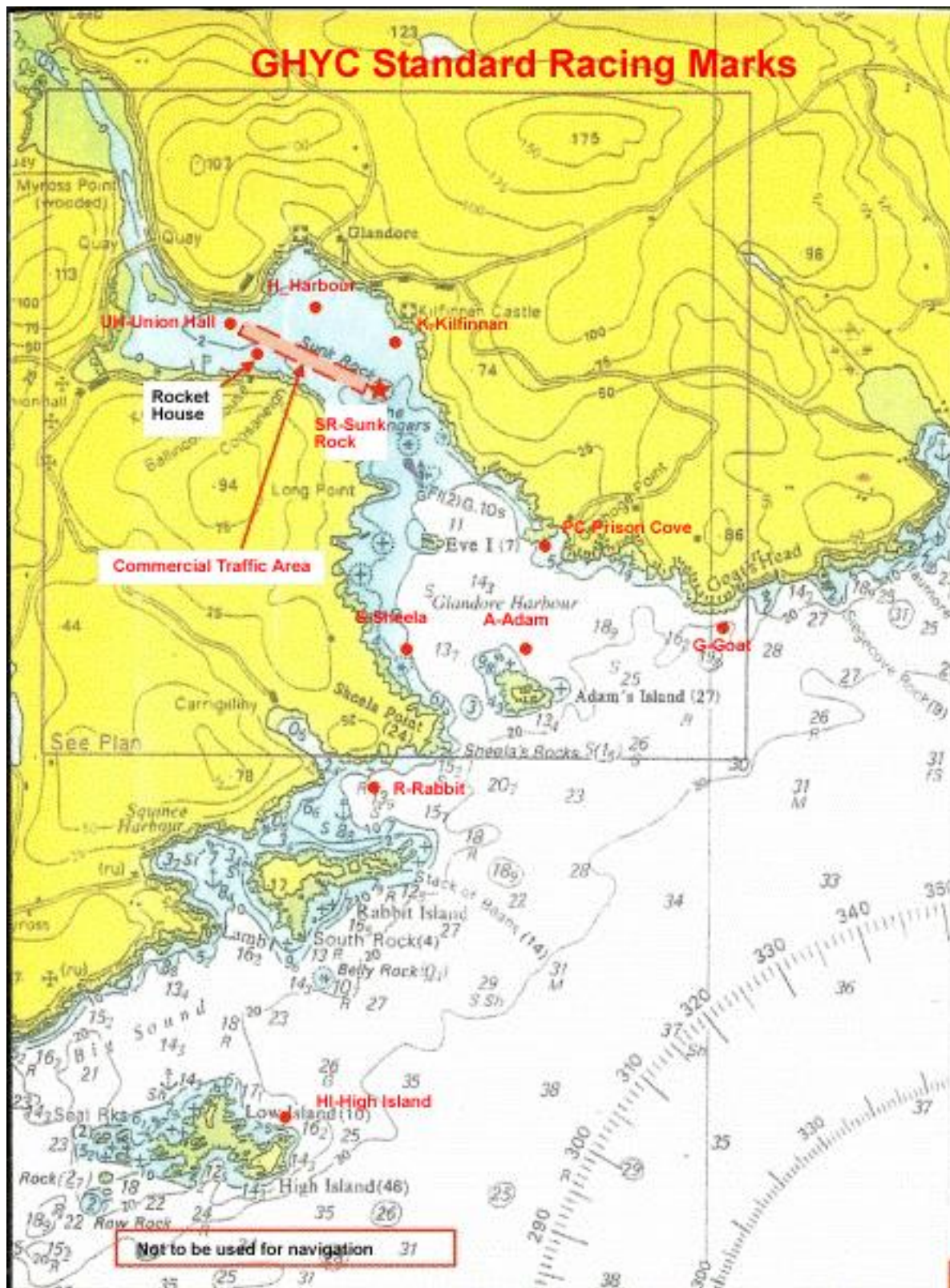


**NOT TO BE USED FOR NAVIGATION**



## ADDENDUM 2a Map of Racing Area and Racing Marks

All marks are white poles except Sunk Rock which is a green navigational buoy.



## SI ADDENDUM 2b - GHYC 2019 - Starting Flags and Notes

Standard Shore based Start/ Finish Lines -		List of Marks and mark codes		Notes	
<div><p>Outer Limit</p><p>Inner Limit</p><p>Shoreline</p><div><div>Moveable</div><div>Red</div><div> Pole</div></div></div>		<div>Marks</div> <div>UH - Union Hall</div> <div>K - Kilfinnan</div> <div>A - Adam</div> <div>H -Harbour</div> <div>SR - Sunk Rock</div> <div>S - Sheila Point</div> <div>R-Rabbit Island</div> <div>RH-Rocket House</div> <div>PC-Prison Cove</div> <div>G-Goat</div> <div>HI-High Island</div>			
<div><b>Start/Finish Line</b> is between Shore Pole (Red) &amp; Outer Limit Mark.</div> <div><u>Note</u> the Inner limit, when used, may not be on the Start Line</div>					

### Starting Sequence

Warning Signal - 5 Minutes to Race	Preparatory Signal - 4 Minutes to Start	Preparatory Signal - 1 Minute to Start	Start Signal
Class Flag(s) are raised    Dragons Squibs	P Flag is raised     And / Or 	P Flag is lowered    And / Or	Class Flag(s) lowered  

NOTE Channel 68 shall be used by the OD