

Karen Horgan Memorial Trophy 2022

27th August

GLANDORE HARBOUR YACHT CLUB

SAILING INSTRUCTIONS

These Sailing Instructions must be read in conjunction with the NOR

1 SIGNALS MADE ASHORE

No signals will be flown ashore. Any amendments will be posted on the club noticeboard.

2 SCHEDULE OF RACES

2.1 The Schedule will be as described in the NOR

3 CLASS FLAGS

Class flags will be: Dragons: Flag D, Squibs: Naval Numeral 9

4 RACING AREA AND MARKS

4.1 The racing area will be between Glandore Harbour and Castletownshend Harbour.

4.2 Rabbit mark will be a red buoy with a flag in the bay to starboard past Sheela Point between the mainland and Rabbit Island, and the Stack of Beans mark will be a red buoy with a flag to the east of the rocks off the Stack of Beans at the east side of Rabbit Island. Refer to Appendix 2 of this document.

5 THE COURSE

The Course for the race including the side for marks to be left is intended to be as follows:-

5.1 Glandore to Castletownshend

5.1.1 Dragons: Start, **Rabbit Mark P, Stack of Beans Mark S**, High Island S, Skeddy Island S, Finish

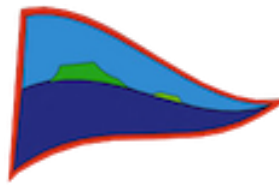
5.1.2 Squibs: Start, **Rabbit Mark P, Stack of Beans Mark S**, Rabbit Island S, Skeddy Island S, Finish

5.2 An extra first mark may be introduced on the day.

5.3 Return Race: Castletownshend to Glandore

5.3.1 Dragons & Squibs : Start, Skeddy Island P, Finish

5.4 NOTE: The Race Officer may alter the course on the day of the race to adapt to weather conditions however the races shall be from Glandore to Castletownshend and from Castletownshend to Glandore.



6 THE START

6.1 GHYC Start

6.1.1 The starting line will be between the Committee/ Support Boat and either a laid mark or the Harbour mark, to be announced on the day.

6.2 Castletownshend Start

6.2.1 This will be between the pole with the orange flag on the committee boat and the house on the east side of the harbour which is the same as used on the Castletownshend Finish Line,.

7 THE FINISH

7.1 The Castletownshend Finishing line will be between a pole with a blue flag on the Committee boat which will be close to the shore on the western side of the harbour and the S corner the house on the east side of the harbour as shown on the photographs in Appendix 1 of this SI.

7.2 The Glandore Finishing line will be between the the pole with a blue flag on the Committee boat and the Harbour mark.

8 TIME LIMITS

8.1 The Race Time Limit for both races will be 180 minutes

9 PRIZES

9.1 For the race to Castletownshend:

9.1.1 The Karen Horgan Memorial Perpetual Trophy for the Squib class.

9.1.2 Takeaway prizes will be awarded to the 1st and 2nd place boats in each class.

9.1.3 Other prizes may be awarded.

9.2 For the return race from Castletownshend to Glandore:

9.2.1 The Squib Perpetual Trophy presented by Kieran o'Donoghue, and

9.2.2 The Dragon Perpetual Trophy presented by Kieran o'Donoghue

9.2.3 And takeaway prizes for the 1st and 2nd placed boat in each class.

10 PROTESTS AND REQUESTS FOR REDRESS

10.1 Protest forms are available from the race officer at the race office. Protests and requests for redress or reopening shall be delivered there within the appropriate time limit.

10.2 The protest time limit is 60 minutes after the last boat has finished the last race of the day or the race committee signals no more racing today, whichever is later.

10.3 Notices will be posted no later than 30 minutes after the protest time limit to inform competitors of hearings in which they are parties or named as witnesses and where the hearings will be held.

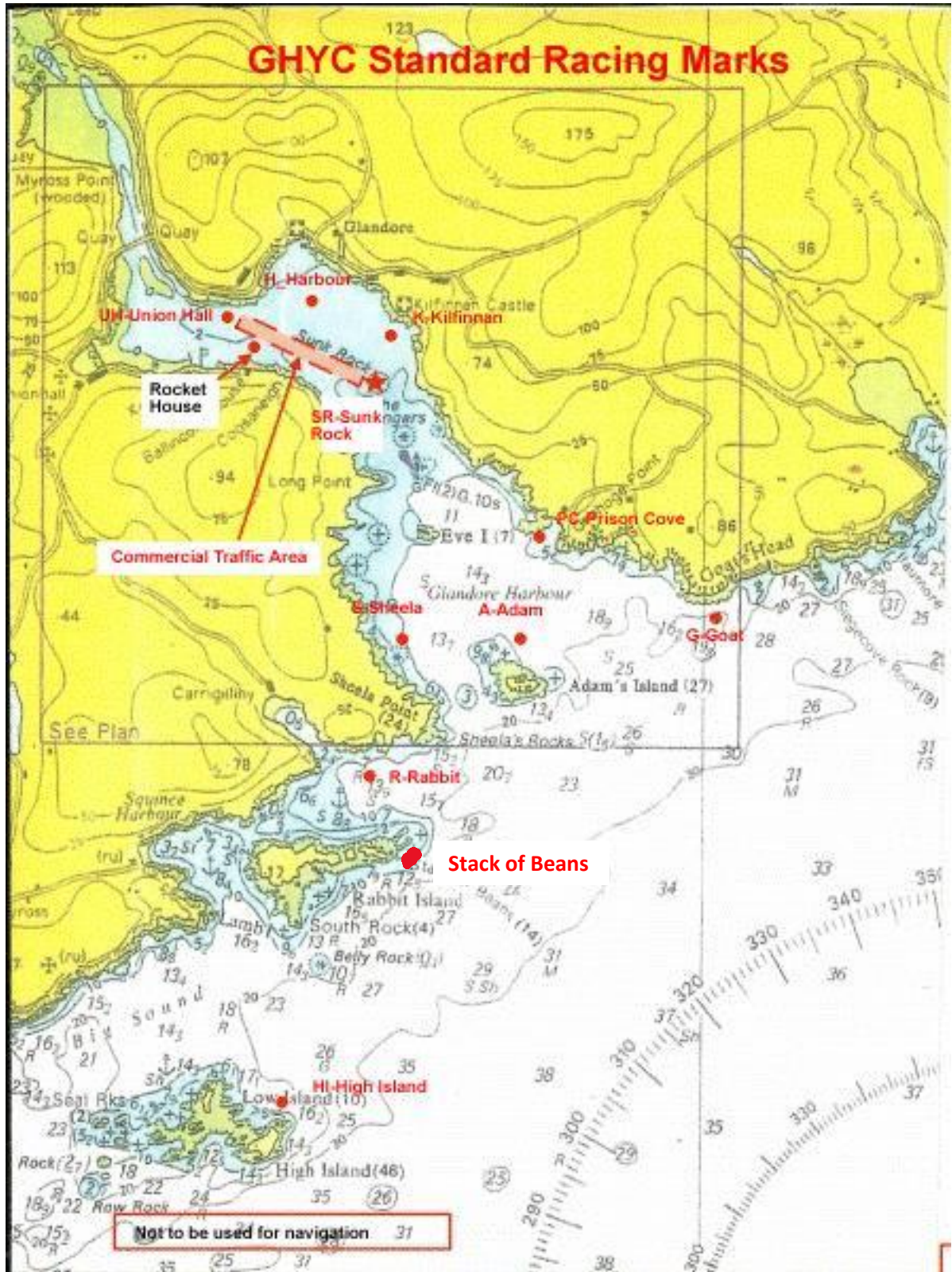
10.4 Arbitration as described in RRS Appendix T will be offered.

11 SAFETY

11.1 Personal Floatation Devices (PFD's). All competitors shall wear PFDs at all times while afloat, except briefly while changing or adjusting clothing or personal equipment. Flag Y will not be displayed. Wet suits and dry suits are not PFDs. This alters RRS Rule 40

Attached: Appendix 1 Castletownshend Finish Line
Appendix 2 map of marks

GHYC Standard Racing Marks



Appendix 1



The Castletownshend Finish line will be the line between the South-easterly corner of building on Eastern shore and the shed on the waters edge on the Western shore, see below.

Eastern end

Western end

